

GROW

Carrs' Seeds Latest News
September 2020

Trading Hours

Mon - Fri
8.00am - 5.30pm

Saturday Trading
9am till 11.30am



DIARY DATES

Lower EP Spring Crop
Walk - Cummins
Tue 8th Sept

Pioneer Canola STRIKE
Field Walk - Cummins
details pg 3.
Wed 30th Sept

ChemCert
Accreditation - Cummins
Tue 13th Oct

September 2020						
MO	TU	WE	TH	FR	SA	SU
31	1	2	3	4	5	6
7	8	9	10	11	12	13
14	15	16	17	18	19	20
21	22	23	24	25	26	27
28	29	30	1	2	3	4
5	6	7	8	9	10	11



Crop inspections with Bridget Heal



Photo 1 is an example of typical *clethodim* damage in canola, as you can see the buds and flowers are distorted. The photo was taken on the 31st of July when this particular paddock started flowering, the crop has now grown out of it and there is no longer any visual damage present .



Aerial blackleg has been a common sight during the flowering period of canola on the lower Eyre Peninsula in recent years. As shown in photo 2 to the top right, lesions and black pycnidia (spots) on the peduncles and flowers are typical symptoms of the disease. This form of blackleg is also referred to as upper canopy infection (UCI) and can affect all aerial parts of the plant such as the flowers, peduncles, main stem, branches and pods. UCI has become more prevalent in recent years and this is partly due to earlier sowing which results in earlier flowering in mid-late winter when the conditions are cold and wet, favouring blackleg infection.

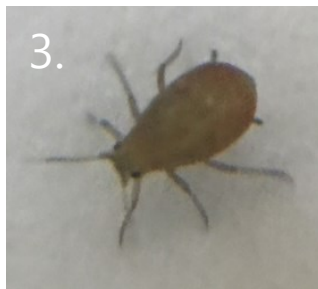


Photo 3 to the left is a *green peach aphid (GPA)*, they have been present in some canola paddocks, however numbers have been relatively low. GPA are not likely to cause much damage through direct feeding like other aphid species but they are a vector of important viruses. These viruses include beet western yellows virus BWYV, cauliflower mosaic virus (CaMV), turnip mosaic virus (TuMV) and cucumber mosaic virus (CMV) all of which do more damage to canola at the seedling stage, viral infections that occur after the rosette stage generally have little effect on yield.

Needing to Update your Chemical Accreditation Information with us?

Recently renewed or completed your first time chemical accreditation?

Please feel free to email through scanned copy of Accreditation to
admin@nricts.com.au
OR Let us know next time you come through and we can grab a copy.



Cummins Rural Traders Pty Ltd T/A Carrs' Seeds
1-7 Phillips Street, Cummins, SA, 5631
Ph: (08) 8676 2016 Fax: (08) 8676 2007
admin@nricts.com.au www.carrsseeds.com



GROW

Carrs' Seeds Latest News
September 2020

Pre-Harvest Chaser Bin Maintenance Checklist

Each year leading up to Harvest farmers scramble to make sure everything is ready. Trucks are sweet to go, the harvester is in perfect condition, extra parts are stocked in the shed, and the new farmhand has a good idea of what's to come.

Often forgotten is the Chaser Bin, a major component of having an efficient harvest season, and for that, we are here to help.

We have put together a quick check-list that you should definitely read and consider going into Harvest 2020.

Check your tyre pressure. It seems simple, and it is. Find out now if you need to pump those bad boys up before getting it into the paddock.

Check your auger flighting to ensure it hasn't worn thin. If it has it's time to organise a replacement. Thin auger flighting can slow down your discharge rate, which is ultimately going to slow down your entire operation.

Check your bearings ensuring they are greased, and that there is no obvious wear.

Check your sprockets for wear.

Ensure that your chain is tensioned. (Tensioning the chain regularly not only enhances the safety of the operator but also reduces the amount of chain wear and damage.)

Have a once over with your roll tarp, ensuring there are no holes or rips.

Check the clutch on your PTO shaft.

Grease your uni-joints.

Make sure your light kit is operational.

Ensure ample water is in your firefighting unit.

General once over for any obvious cracking or fatigue.

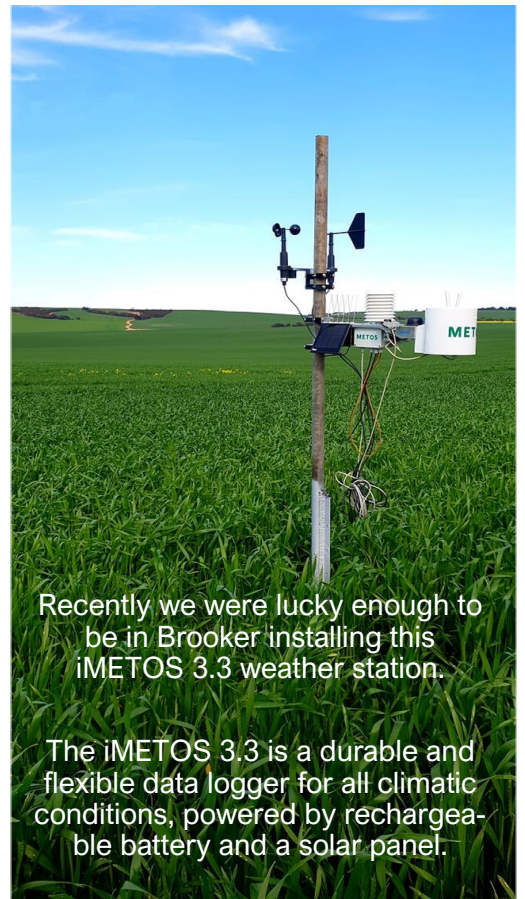
Some of these may seem simple, and they are, but it's often the small things that can leave you feeling behind during a hectic harvest.

So take a minute and check your Chaser Bin – you'll thank yourself later.

Article thanks to GrainKing grainking.com.au



METOS[®] ANZ



Recently we were lucky enough to be in Brooker installing this iMETOS 3.3 weather station.

The iMETOS 3.3 is a durable and flexible data logger for all climatic conditions, powered by rechargeable battery and a solar panel.



SWATH ROLLER

A swathroller compacts your swath by pushing it down, which reduces crop loss by preventing some of the wind scattering.

- 2.42 Meter roller width
- Adjustable drawbar
- Roller height is easy to adjust

Contact Douglas to Order yours TODAY!



Burando Hill



Cummins Rural Traders Pty Ltd T/A Carrs' Seeds
1-7 Phillips Street, Cummins, SA, 5631
Ph: (08) 8676 2016 Fax: (08) 8676 2007
admin@nricts.com.au www.carrsseeds.com





Carrs' Seeds Latest News
September 2020

Pioneer Canola STRIKE Field Walk

Settlers Rd Cummins – Biz Minhard's

Wednesday September 30th – 2 sessions



YOU'RE INVITED

Join us at a Canola STRIKE Field Walk

Come and have a look at the **NEW Clearfield hybrid 44Y94CL**, replacing 44Y90CL. With a consistent **5% Yield Advantage over Y90** (NVT, Pioneer STRIKE and Pioneer Research) you won't want to miss having a look before it's available for 2021 sowing!

Also discussing Roundup Ready options for 2021, TT Canola pipeline, boosting Water Use Efficiency/Yield of Canola and Disease Management.

DATE: Wednesday 30th September 2020
TIME: 10:00am - 11:30am and 1pm to 2:30pm
WHERE: 3786 Settlers Rd – West from Cummins off Warrow Rd. Look for signs on the day



RSVP: Paul Jenke – 0408 807 809 or Jason Ridgway – 0427 891 110

email paul.jenke@gentechseeds.com

NEW PIONEER® HYBRID 44Y94 CL

AN EXCITING NEW HYBRID OFFERING MORE OPTIONS IN THE EARLY-MID SEASON CLEARFIELD® SEGMENT

The newest addition to the Y Series portfolio, 44Y94 CL offers an impressive package of agronomic traits and performance. Excellent early season growth coupled with outstanding yield and oil potential delivers greater returns per hectare.

KEY FEATURES

Highly adaptable to suit a range of growing zones including dryland

and irrigation.

Early-mid (4) maturity, displaying excellent adaptability. Ideally suited to low to medium rainfall growing zones.

The combination of both major gene & polygenic blackleg resistance alongside market leading seed treatments offers a robust blackleg management package.

Exceptional early growth resulting in superior crop competition and early canopy closure resulting in enhanced weed control and reduced weed seed set.

Pasture Topping with Denis Pedler

At the moment grass pastures have already started running up to head, with the first being Barley grass. The trick is to try and control grasses setting seed when you have 4 different grasses maturing at different times. Glyphosate 550 (Pro Mix) @ 250ml/ha plus collide penetrant @ 350ml/100ltr water is enough to hay freeze grass seeds in their tracks. You may have to apply one application to each different maturity of grass species, i.e. Barley grass, Silver Grass, Brome Grass & Ryegrass. Add 120ml/ha of Lematt for mites and lucerne flea control. (14 day WHP to be observed.)

The benefits of removing Barley grass & Brome grass now is it reduces these plants ability to set seed and insecticide takes the pressure off any medics or clover in the pasture, and increases seed set in these more desirable pasture species.

Also consider if the insecticide is applied close to the Ideal Time Right timing it will reduce RLEM egg laying for next Season.



Cummins Rural Traders Pty Ltd T/A Carrs' Seeds
1-7 Phillips Street, Cummins, SA, 5631
Ph: (08) 8676 2016 Fax: (08) 8676 2007
admin@nricts.com.au www.carrsseeds.com



GROW

Carrs' Seeds Latest News
September 2020

NOW STOCKING

PIPE FITTINGS

NORMA

Metric Telescopic Fittings

The Metric Telescopic Compression Fittings range is Norma Group manufactured with a high level of quality for product peace of mind. These fittings are UV stabilised to ensure they will continue to perform, even in harsh sunlight conditions and are the ideal connection for repairing and tapping into metric PE pipe. These ends are also interchangeable with the Norma rural fittings.

The telescopic fittings will speed up the process of repairing a broken pipe, while reducing the physical labour involved and the amount of products used. It is no longer necessary to create enough distance between two joiners to flex new pipe in. Simply remove the broken section and use a telescopic fitting by connecting one end and extending the other.

UV Stabilised

- 50 year design life.

Fast Repair

- No need to dig as far to perform a repair job.

Innovative Design

- Dual O-rings are used to reduce chances of leaks.

Blue Interchangeable Ends

- Fast identification to ensure you have the correct fitting.

Broad Range

- There is a fitting to adapt to most installations.

Safe and Durable

- Confidence that the fitting will perform.



Parts & Materials

Parts & Materials

1. Nut	Polypropylene Copolymer	5. Outer Body	Polypropylene Copolymer
2. Clutching Ring	Acetyl	6. Telescopic Nut	Polypropylene Copolymer
3. Holder	Polypropylene Copolymer	7. Insert O-Ring	Nitrile Butadiene Rubber (NBR)
4. Metric O-Ring	Nitrile Butadiene Rubber (NBR)	8. Inner Body	Polypropylene Copolymer



Specifications

• Pressure rating: 1,250kPa.

Applications

• Repair and maintenance.

Patented Design

• Australian and New Zealand Patented Design No. 2006303813, 567538.



Shearing Supplies Checklist

Are you ready for shearing?

- Rattle
- Branding Fluid
- Spray Marker
- Wool Packs & Fasteners
- Sweeps, Brooms & Wool Scoops
- Wool Bale Hooks
- Wool Bale Stencils & Ink
- Oil Cans & Tally Counters
- Grinding Papers
- Back Liner
- Oral Drench
- Power Doser

Drop in, we have what you need.

Saturday 29th August, saw us at the Cummins Golf Course for Our Client & Family Golf Day with the help of some of the Cummins Golf Professionals we were able to offer a Ambrose Style Day. We'd like to Thank those who were able to attend along with the Cummins Golf Course and their players. A great day was had by all.



Maverick

- ✓ Lice and worm control
- ✓ Off shears pour-on
- ✓ Excellent rotation option
- ✓ Rainfast



Maverick is used for the control of sheep body lice (*Bovicola ovis*) on sheep off-shears, including lice resistant to synthetic pyrethroids. For the treatment and control of abamectin sensitive strains of gastrointestinal nematodes of sheep (including levamisole resistant strains).

1 DRUM 2 JOBS

SHEEP LICE

+ WORMS[^]

INCLUDING BARBER'S POLE WORM

+ \$25 CASHBACK[^]

[^]\$25 Cashback with every 25L Maverick purchase from 1st Aug – 31st Dec 2020

Up to \$500 per farm



Cummins Rural Traders Pty Ltd T/A Carrs' Seeds

1-7 Phillips Street, Cummins, SA, 5631

Ph: (08) 8676 2016 Fax: (08) 8676 2007

admin@nricts.com.au

www.carrsseeds.com

