

# GROW

Carrs' Seeds Latest News  
October 2020

## Trading Hours

Mon - Fri  
8.00am - 5.30pm  
Saturday Trading  
9am till 11.30am



## DIARY DATES

Daylight Savings  
Sun 4th Oct

ChemCert Accreditation  
Cummins  
Tue 13th Oct

Free Farm First Aid  
Training  
Various Locations  
7th, 8th, 9th Oct  
*page 3 for details*

drumMuster  
Cummins  
27th & 28th Oct

### October 2020

MO	TU	WE	TH	FR	SA	SU
28	29	30	1	2	3	4
5	6	7	8	9	10	11
12	13	14	15	16	17	18
19	20	21	22	23	24	25
26	27	28	29	30	31	1
2	3	4	5	6	7	8



Grow a better tomorrow.

### drumMUSTER

The next DrumMuster will be held on Tuesday and Wednesday, 27 & 28 October. Bookings are essential and can be made by contacting the Cummins Council Office and speaking to Works Admin on 8676 0400.



## NUFARM

### WEEDMASTER DST

Weedmaster DST is an **Australian** made Glyphosate that is registered for use in desiccating in both pre harvest and cutting application. It can also be used effectively as a harvest aid and weed control due to it's high strength dual salt technology/formation. It also contains unique surfactant package that causes a fast brownout of weeds throughout multiple crop types.



### ANNUAL WEEDS

WHEAT: 1.4 – 4.4L/ha. (Recommended Rate to control ryegrass 2.4 lts/ha)

Weedmaster DST should be applied to mature crops from late dough stage (28% moisture) onwards. However, it should not be used on crops intended for seed or sprouting. Mature crops should not be harvested within 5 days after application.

CANOLA: 1.4 – 4.1L/ha. (Recommended rate to control ryegrass 2.8 lts/ha )

Weedmaster DST should be applied to mature crops from early senescence (minimum of 20% canola seeds as a random visual sample from various heights in the crop canopy from the main stem have changed to dark brown/black colour) prior to windrowing or direct harvest. However, it should not be applied after the completion of the windrowing process and a mature crop should not be harvested within 5 days of being sprayed. Weedmaster DST

*Did you know... Nufarm is the only global crop protection brand with significant manufacturing assets in Australia and its commitment to being a true partner for growth includes focusing on our Australian heritage.*

Choosing **Nufarm** means  
you're choosing Australian jobs.



Cummins Rural Traders Pty Ltd T/A Carrs' Seeds  
1-7 Phillips Street, Cummins, SA, 5631  
Ph: (08) 8676 2016 Fax: (08) 8676 2007  
admin@nricts.com.au www.carrsseeds.com

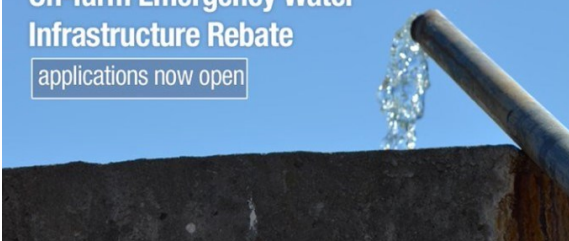


# GROW

Carrs' Seeds Latest News  
October 2020

## On-farm Emergency Water Infrastructure Rebate

applications now open



The On-farm Emergency Water Infrastructure Rebate has reopened. Primary producers may be eligible to claim a 30% rebate (up to \$30,000) for works undertaken between 1 Jul 19 - 30 Jun 20. Applications close 31 Mar 2021, or when funding has been exhausted.

[https://pir.sa.gov.au/grants\\_and\\_assistance](https://pir.sa.gov.au/grants_and_assistance)



## EMERGENCY PHONE NUMBERS

POLICE, FIRE, AMBULANCE 000

CUMMINS CFS (FIRE) (08) 8676 2458

CUMMINS HOSPITAL (08) 8676 0200

CUMMINS MEDICAL CLINIC (08) 8676 2210

CUMMINS POLICE (08) 8676 2001

POISONS INFO CENTRE 13 11 26

CUMMINS SES (08) 8676 2165

or

132 500 emergency

## Header fire reduction checklist

1. Recognise the big four factors that contribute to fires: relative humidity, ambient temperature, wind and crop type and conditions. **Stop harvest when the danger is extreme!**
2. Focus on service, maintenance and machine hygiene at harvest on the days more hazardous for fire. Follow systematic preparation and prevention procedures.
3. Use every means possible to avoid the accumulation of flammable material on the manifold, turbocharger or the exhaust system. Be aware of side and tailwinds that can disrupt the radiator fan air blast that normally keeps the exhaust area clean.
4. Be on the lookout for places where chafing can occur ie fuel lines, battery cables, hot wires, tyres, drive belts etc.
5. Avoid overloading electrical circuits. Don't replace a blown fuse with a higher amperage one. It is your only protection against wiring damage from shorts and overloading.
6. Periodically check bearings around the front and the machine body. Use a handheld digital heat-measuring gun for temperature diagnostics on bearings, brakes etc.
7. Drag chains, or better still drag cables or grounding conductors, may help dissipate electrical charge but are not universally successful in all conditions. There are some invaluable fire-suppressing options on the market.
8. Use the battery isolation switch when the header is parked. Use vermin deterrents in the cab and elsewhere, as vermin chew some types of electrical insulation.
9. Observe the Local Fire Danger protocols on high fire risk days.
10. Maintain two-way or mobile phone contact with work crew and others. Keep an eye out for hazards on machinery during the season.



Cummins Rural Traders Pty Ltd T/A Carrs' Seeds  
1-7 Phillips Street, Cummins, SA, 5631  
Ph: (08) 8676 2016 Fax: (08) 8676 2007  
[admin@nricts.com.au](mailto:admin@nricts.com.au) [www.carrsseeds.com](http://www.carrsseeds.com)







**Carrs' Seeds Latest News**  
**October 2020**

Together with the help of

**NORMA Group**

we are wanting to place a Bulk Order of Poly Fittings and Extras to keep the cost to everyone down. On the last 2 pages we have an Order Form for your convenience. Please fill out and return with your required numbers and we will place a BULK Order.

**ORDER TODAY TO SAVE TOMORROW**



*Employee News*

This month saw us say Goodbye and Good Luck to Amy Williams.

Amy joined the crew in May 2017 and since then has filled the role as our accounts and financial officer and a valued part of our team.

Amy has since filled a role closer to her home in Tumby Bay and will no doubt be making a impact already. From all of us here at Carrs' Seeds Thank you and we wish you the very best of Luck!

Steven Johnson has joined the team as our New accounts and financial officer. Steven joins us from Port Lincoln and has an extensive background in Accounting. We welcome Steven to Carrs' Seeds and please introduce yourself if you see him about the place.

**SILO BAGS & MACHINE?**

We are currently taking orders for Silo bags for this coming season. Silo Bags maybe a cost effective way of holding onto grain without tying up your field bins and shed space.

Carrs' Seeds have both a filling and emptying machine available for hire.

*Feel free to give us a call to discuss options 08 8676 2016*



**Free Farm First Aid Training**  
 for primary producers, farm workers and farm contractors

On-farm accidents are a major problem for farming in Australia. Incidents can involve workers, bystanders to work and others (including children) and occur in a range of circumstances on farms of different agricultural enterprises.

Develop skills and improve the safety of your farm or rural workplace by enrolling in this First Aid training course, delivered by an accredited Red Cross Trainer.

Each workshop covers topics including:

- \* Legal Requirement \* Cardiac Emergencies \* Basic Life Support (DRSABCD) \* Severe Bleeding and Wound Care \* Reporting \* Fractures and Dislocations \* Recovery And Resilience \* Shock Management \* Breathing Emergencies \* Environmental Impacts \* Allergic Reaction/Anaphylaxis \* Envenomation \* Wellbeing and Mental Illness Support and Assistance

The participants are provided with the knowledge and skills to assist themselves, their family and friends to cope with accidents and injury and the importance of both physical and mental wellbeing.

Sessions run from 10am to 4:30pm.

Arno Bay Sports Complex Wednesday 7th Oct  
 Cleve, Sims Farm Thursday 8th Oct  
 Cowell Institute Supper Room Friday 9th Oct



All training materials, morning tea and lunch are included. Limited places!

To register or for more information, contact:  
 Jasmin Piggott phone: 0438 207 434 email: jpiggott@redcross.org.au



**Cummins Rural Traders Pty Ltd T/A Carrs' Seeds**  
 1-7 Phillips Street, Cummins, SA, 5631  
 Ph: (08) 8676 2016 Fax: (08) 8676 2007  
 admin@nricts.com.au www.carrsseeds.com



# GROW

Carrs' Seeds Latest News  
October 2020



New Tanks In Store **NOW** with Great Prices too  
Boot!  
Various Sizes for **ALL** Jobs.

## 1 DRUM

## 2 JOBS



**\$25 CASHBACK**  
ON EVERY 25 L DRUM  
UP TO \$500  
PER FARM\*



**SHEEP LICE**  
+  
**WORMS**  
INCLUDING BARBER'S POLE WORM  
+  
**\$25 CASHBACK**

Toll Free **1800 885 576**  
[www.coopersanimalhealth.com.au](http://www.coopersanimalhealth.com.au)

\* Treatment and control of abamectin sensitive strains.  
\* **TERMS AND CONDITIONS:**  
To be eligible for the \$25 cashback, producers must purchase a minimum of 1 x 25 L drum of Coopers Maverick between 1st August 2020 and 13th December 2020.  
Multiple purchases of 25 L Coopers Maverick will attract a cashback of up to a maximum of \$500 per farm.  
\* Proof of purchase must accompany each cashback claim.  
\* Claims for cashback must be received by Coopers by 13th December 2020.

© Registered trademark:  
Inverel Australia Pty Ltd (trading as MSD Animal Health), ABN 79008457034  
Copyright © (2020) Inverel International B.V. All rights reserved.

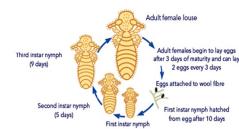


## Lice Treatment for Sheep *Conditions & Environment*

**Finding lice** Regular checking of your sheep for the signs of lice is important if infestations are to be identified early. Sheep can be infested with lice without showing overt signs so it is important during regular flock checks to catch some sheep for a closer inspection. To check sheep, choose somewhere with good light and look for lice along the sides of the neck, body and rump. Select sheep that are showing signs of rubbing. Part the fleece 20 times per side each parting being 10cms. Adult lice are readily visible with the naked eye

**Effects of lice** Sheep lice are obligate parasites which means they spend their entire lifecycle on sheep. Lice feed on flakes of dead skin, secretions and bacteria normally found at the surface of the skin. This causes irritation and therefore sheep bite, rub and pull at their wool. Signs of a sheep lice infestation includes cotted, discoloured fleece, fleece derangement, reduction in fleece weight and scouring yield.

**Life cycle** Adult females lay 2-3 eggs every three days or so. The eggs are attached to wool fibres and hatch after about 10 days. The ideal temperature for egg laying and hatching to occur is 36-39°C and humidity 70-75%. Temperatures outside this range inhibit egg laying and humidity >90% prevents egg hatching. The newly hatched immature lice go through 3 nymph stages with a moult between each to become adult lice. The whole cycle can take 31-34 days.



Entire life cycle can take from 31 to 34 days.

**Transmission** The main way lice spread is via direct contact between sheep so good boundary fences are crucial to keeping stray sheep out. However, not all introduced sheep get in unintentionally. It is important to have biosecurity measures in place for all introduced sheep such as purchases, rams, sheep coming back from agistment or shows for example. Where possible, know the status of purchased sheep via the health history provided by the vendor. Other sources of infestation include shearing sheds where lice can survive for up to 2 weeks and on clothing and shearers' footwear. Despite common belief, tags of wool on fences are not a major source of infestation because lice do not survive long under these conditions.

**Resistance** Some strains of lice have become resistant to certain chemical groups. Notably, there is widespread resistance in sheep lice populations to the synthetic pyrethroid (SP) and insect growth regulator (IGR) groups. In order to minimise the emergence and development of resistance, chemicals should be used strictly according to label instructions.

Article thanks to [www.growsolutions.com.au](http://www.growsolutions.com.au)



Cummins Rural Traders Pty Ltd T/A Carrs' Seeds  
1-7 Phillips Street, Cummins, SA, 5631  
Ph: (08) 8676 2016 Fax: (08) 8676 2007  
[admin@nracs.com.au](mailto:admin@nracs.com.au) [www.carrsseeds.com](http://www.carrsseeds.com)





# METRIC BLUE LINE FITTINGS



**CUSTOMER NAME:**

**TRADING NAME:**

**EMAIL:**

**PHONE NO.:**

## ORDER FORM

NORMA METRIC JOINER POLY X POLY PN16		20MM (NMB122)	25MM (NMB133)	32MM (NMB144)	40MM (NMB155)	50MM (NMB166)
NORMA METRIC MALE END CONNECTOR POLY X M.I. PN16			25MMX1" (NMB233)	32MMX1 1/4" (NMB244)	40MMX1 1/2" (NMB255)	50MMX2" (NMB266)
NORMA METRIC TEE POLY X POLY X POLY PN16		20MM	25MM (NMB333)	32MM (NMB344)	40MM (NMB355)	50MM (NMB366)
NORMA METRIC FEMALE TEE POLY X F.I. X POLY PN16			25MMX1"X25MM (NMB433)	32MMX1 1/4"X32MM (NMB444)	40MMX1 1/2"X40MM (NMB455)	50MMX2"X50MM (NMB466)
NORMA METRIC ELBOW POLY X POLY PN16		20MM	25MM (NMB533)	32MM (NMB544)	40MM (NMB555)	50MM (NMB566)
NORMA METRIC FEMALE END CONNECTOR POLY X F.I. PN16			25MMX1" (NMB833)	32MMX1 1/4" (NMB844)	40MMX1 1/2" (NMB855)	50MMX2" (NMB866)
POLY THREADED HOSE BARB GUYCO		20MM X 3/4"				
POLY THREADED MALE FE- MALE ELBOW GUYCO		20MM X 3/4" (GMFE20)	25MM X 1" (GMFE25)	32MM X 1 1/4" (GMFE32)	40MM X 1 1/2" (GMFE40)	
POLY THREADED REDUC- ING NIPPLE GUYCO		40MM X 1" (GRHN4025)	40MM X 1 1/4" (GRHN4032)	50MM X 1" (GRHN5025)	50MM X 1 1/4" (GRHN5032)	50MM X 1 1/2" (GRHN5040)
POLY THREADED NIPPLE GUYCO		20MM X 3/4" (GHN20)	25MM X 1" (GHN25)	32MM X 1 1/4" (GHN32)	40MM X 1 1/2" (GHN40)	50MM X 2" (GHN50)
POLY THREADED FEMALE FEMALE ELBOW GUYCO		20MM X 3/4" (GE20)	25MM X 1" (GE25)	32MM X 1 1/4" (GE32)	40MM X 1 1/2" (GE40)	50MM X 2" (GE50)

# RURAL GREEN LINE FITTINGS



CUSTOMER NAME:

TRADING NAME:

EMAIL:

PHONE NO:

## ORDER FORM

NORMA RURAL JOINER POLY X POLY			1" (NR133)	1 1/4" (NR144)	1 1/2" (NR155)	2" (NR166)
NORMA MALE RURAL END CONNECTOR POLY X M.BSP			1" X 1" (NR233)	1 1/4" X 1 1/4" (NR244)	1 1/2" X 1 1/2" (NR255)	2" X 2" (NR266)
NORMA RURAL TEE POLY X POLY X POLY			1" (NR333)	1 1/4" (NR344)	1 1/2" (NR355)	2" NR366)
NORMA FEMALE RURAL TEE POLY X POLY X F. BSP			1" X 1" (NR433)	1 1/4" X 1 1/4" (NR444)	1 1/2" X 1 1/2" (NR455)	2" X 2" (NR555)
NORMA RURAL ELBOW POLY X POLY			1" (NR533)	1 1/4" (NR544)	1 1/2" (NR555)	2" (NR566)
NORMA FEMALE RURAL END CONNECTOR POLY X F. BSP			1" (NR833)	1 1/4" (NR844)	1 1/2" (NR855)	2" (NR866)
POLY THREADED REDUCING BUSH GUYCO		1 1/4" X 1" (GRB3225)	1 1/2" X 1" (GRB4025)	1 1/2" X 1 1/4" (GRB4032)	2" X 1 1/4" (GRB5032)	2" X 1 1/2" (GRB5040)
POLY THREADED TEE GUYCO		3/4" X 3/4" (GT20)	1" X 1" (GT25)	1 1/4" X 1 1/4" (GT32)	1 1/2" X 1 1/2" (GT40)	2" X 2" (GT50)
BSP THREADED REDUCING SOCKET GUYCO			1 1/2" X 1" (GRS4025)	1 1/2" X 1 1/4" (GRS4032)	2" X 1 1/4" (GRS5032)	2" X 1 1/2" (GRS5040)
POLY THREADED SOCKET GUYCO		3/4" X 3/4" (GS20)	1" X 1" (GS25)	1 1/4" X 1 1/4" (GS32)	1 1/2" X 1 1/2" (GS40)	2" X 2" (GS50)
BALL VALVE GUYCO		20MM (3/4") (GFBV20)	25MM (1") (GFBV25)	32MM (1 1/4") (GFBV32)	40MM (1 1/2") (GFBV40)	50MM (2") (GFBV50)